



DATCHET FLYER

DATCHET

Flyer (7-8 Dec 24)

CHASE

Polar (14 Dec 24)

YDSC

Monkey (27 Dec 24)

**GJW Direct****Coach Briefing**

QMSC

Bloody Mary (11 Jan 25)

KING GEORGE

Gallop (18 Jan 25)

RUTLAND

Tlger (1-2 Feb 25)

OXFORD

Blue (15 Feb 25)

GRAFHAM

GP (29 Dec 24)

DRAYCOTE

Dash (4-5 Jan 25)

Datchet Water
Sailing Club**GJW Direct**<http://Selden.SailRacer.org>





The Plan

- If weather window allows, racing
- Plan B - shore based workshops
 - Simon Horsfield
 - Sailing Chandlery
 - and others

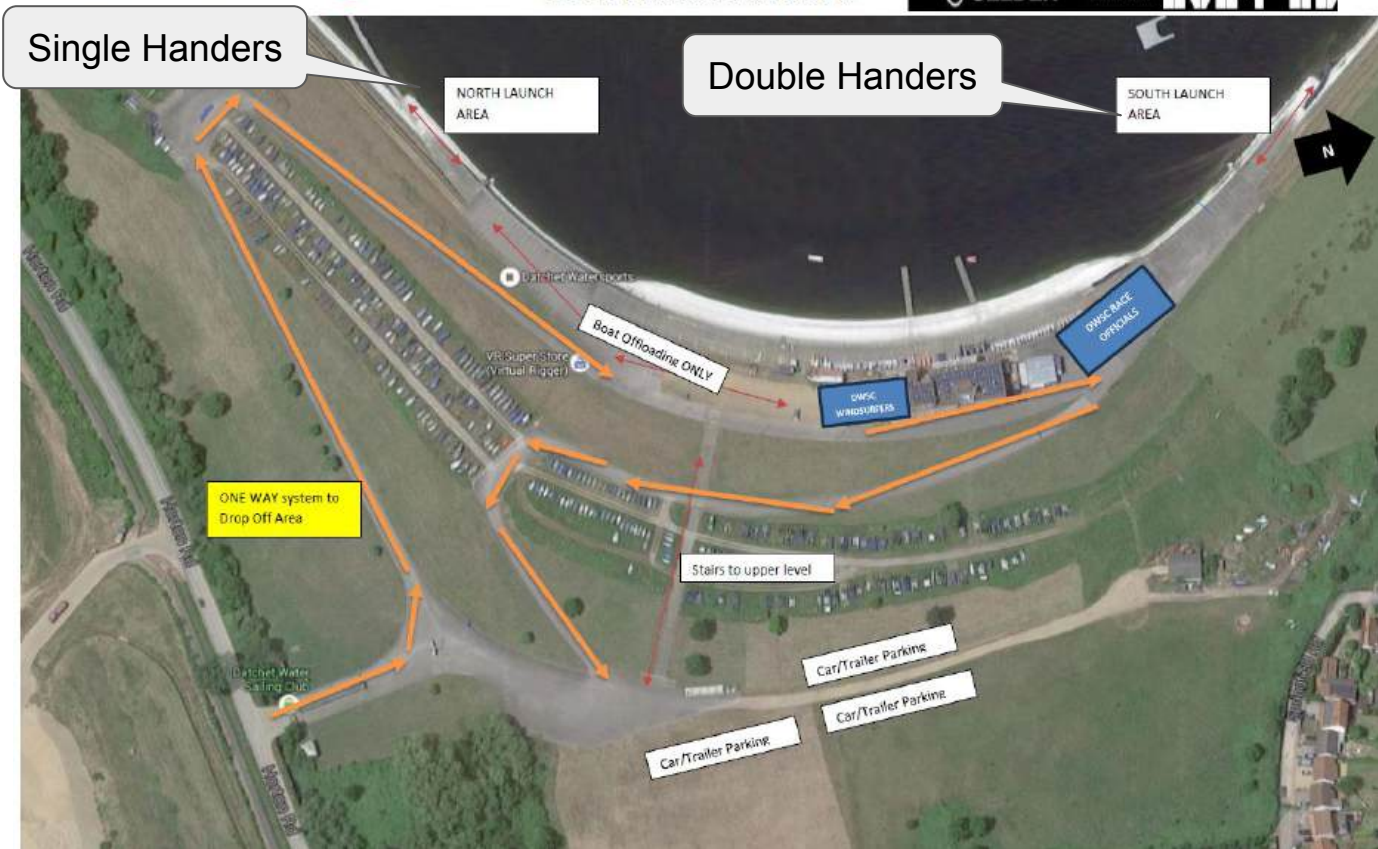


SITE ARRIVAL MAP



Friday boat drop off - 7:30pm

01753683872




High Wind Racing

- Preparation of Boat
- Forecast (outlook of the day)
- Rig set up / sail plan
- Race plan



Manage the Risks

- What's your aim
- what does good look like
- Communication is KEY
- Apply Rule Number 1
- Reduce manoeuvres
- Plan ahead
- Expect others to capsize Plan for this!
- Be prepared to bail
- Remember you aim



Seb (PRO)



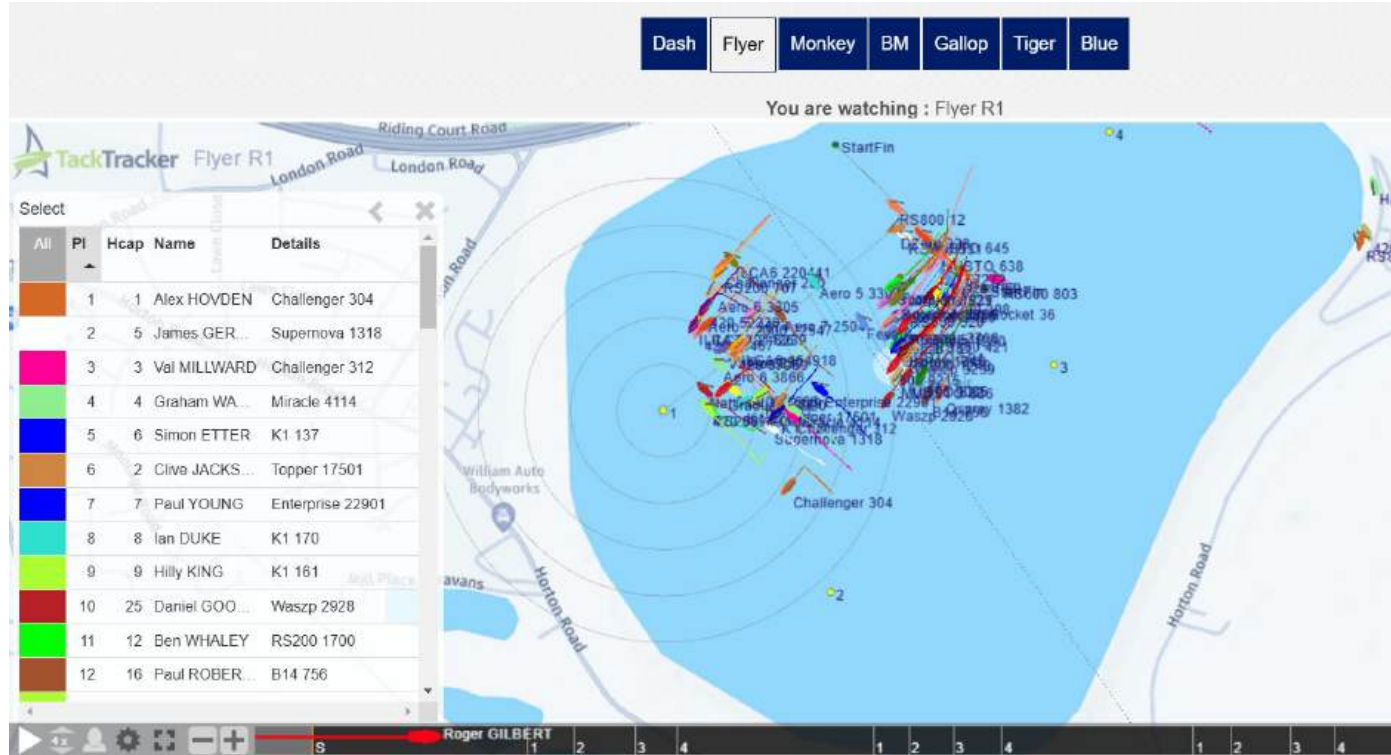
Simon Lovesey



Simon Horsfield

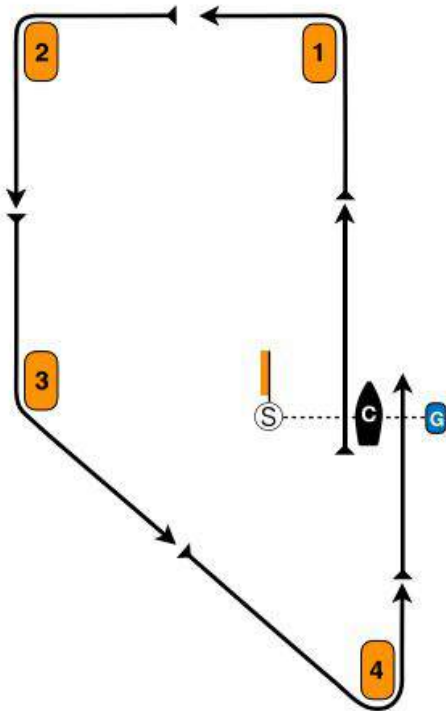
Slow	K1
	RS Aero 7
	National 12
	420
	Supernova
	2000
	RS Venture Connect
	Comet Trio MK 1
	ILCA 7 / Laser
	Solution
	GP14
	ILCA 6 / Laser Radial
	Solo
	Enterprise
	ILCA 4 / Laser 4.7
	2.4 mR
	Topper

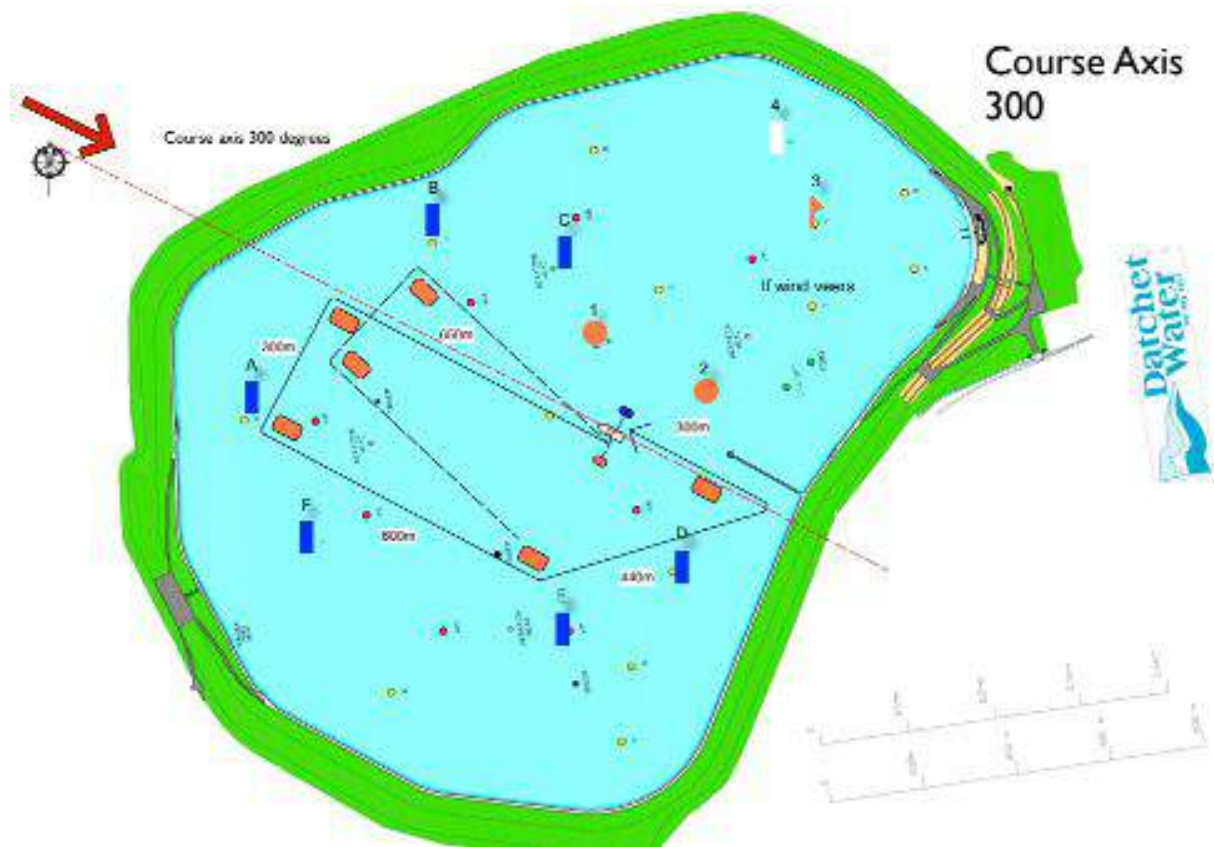
Fast	Waszp
	Musto Skiff
	29er
	RS600
	Osprey
	Vortex
	Fireball
	470
	Merlin Rocket
	RS300
	Phantom
	Kestrel
	Devoti D-Zero
	Hadron H2
	RS200



Attachment A - Courses**Handicap Course 1**Mark Rounding Order

Start – 1p – 2p – 3p – 4p – Cp & Gs







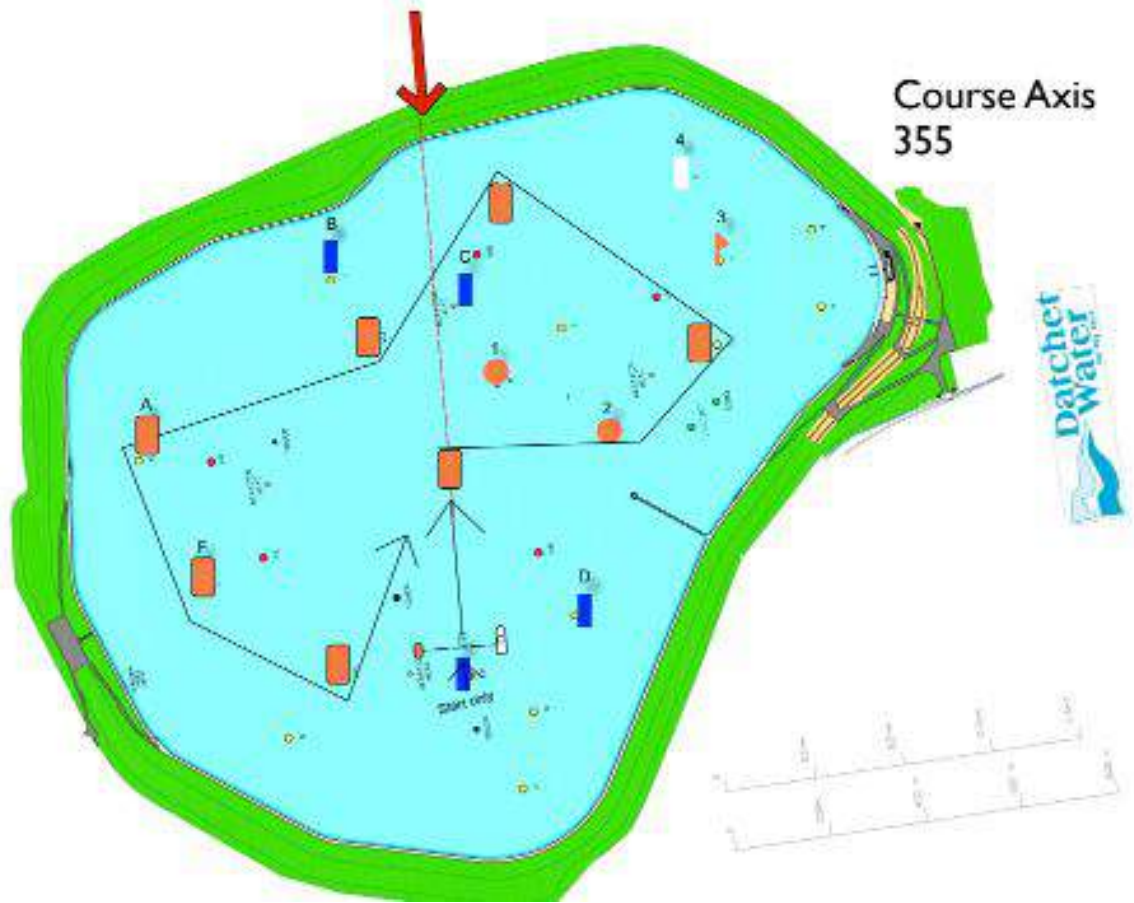
SELDÉN

Sailjuice
Winter Series

2024-25

sailRacer

Course Axis
355



 GJW Direct